

Trailblazer

Technical Analysis

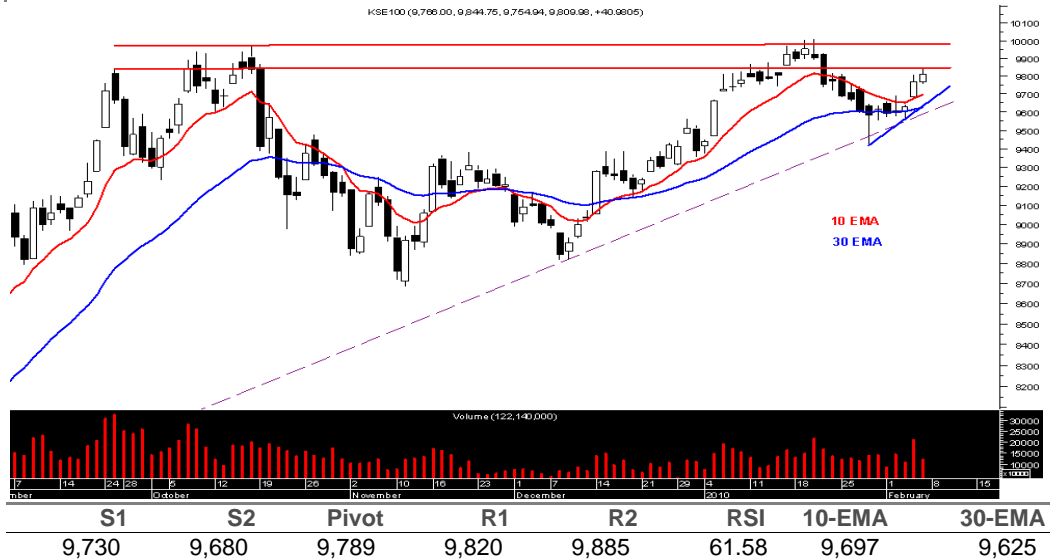
Nurali Barkatali

nurali.barkatali@bmacapital.com
+92 21 111 BMA 111 (Ext: 2056)

KSE100

| | |
|-------------|--------|
| Prev Close | 9,770 |
| Open | 9,766 |
| High | 9,845 |
| Low | 9,755 |
| Close | 9,810 |
| Change | 40.25 |
| %Change | 0.41 |
| Volume (mn) | 122.14 |

Anticipating consolidation at around 9,850



STRATEGY

Market is likely to consolidate in between 9,730 – 9,850, before breaching through the mentioned ceiling level. Major support level is defined at around 9,700. Short term corrections being part of the game should be considered as an opportunity to enter long targeting 9,920 – 10,000.

Yesterday's trading pattern indicates that the rally onwards could be seen in blue chips instead of penny stocks. Therefore, it is recommended to gradually reduce exposure in the latter.

Trailblazer

Technical Analysis

Nurali Barkatali

nurali.barkatali@bmacapital.com

+92 21 111 BMA 111 (Ext: 2056)

Stock Picks

| OGDC | Strategy: Buy | | | Prev Close | | | 119.35 |
|----------------|---------------|--------|--------|-------------------|--------|--------|--------|
| Support | 116.27 | 116.76 | 117.25 | Resistance | 120.42 | 120.91 | 121.37 |

Retracting from the highs made earlier this year i.e. of around PKR120.50, the stock is likely to retest the recently developed supportive range of in between PKR118.30 - 117.50. We suggest a correction in earlier part of the session shall be taken as an opportunity to initiate long with risk defined below PKR117.00.

| PPL | Strategy: N/A | | | Prev Close | | | 198.21 |
|----------------|---------------|--------|--------|-------------------|--------|--------|--------|
| Support | 195.53 | 196.05 | 196.56 | Resistance | 199.91 | 200.43 | 200.92 |

Inability to penetrate through the resistance defined at around PKR200.00. the stock is likely to consolidate in between PKR195.00 - 200.00.

| AHSL | Strategy: Buy / Hold | | | Prev Close | | | 45.77 |
|----------------|----------------------|-------|-------|-------------------|-------|-------|-------|
| Support | 45.34 | 45.45 | 45.55 | Resistance | 46.21 | 46.32 | 46.41 |

Buy on close above PKR46.60 or buy at weakness with risk defined below PKR45.00

| POL | Strategy: Buy | | | Prev Close | | | 234.51 |
|----------------|---------------|--------|--------|-------------------|--------|--------|--------|
| Support | 229.60 | 230.39 | 231.18 | Resistance | 236.30 | 237.09 | 237.84 |

Buy targeting PKR238.00 - 242.00 with risk defined below PKR230.50.

| LUCK | Strategy: Sell | | | Prev Close | | | 70.79 |
|----------------|----------------|-------|-------|-------------------|-------|-------|-------|
| Support | 69.98 | 70.18 | 70.38 | Resistance | 71.68 | 71.88 | 72.07 |

Sell targeting PKR 69.70 - 69.30, risk defined above PKR72.00. (Trade Intraday only)

| BOP | Strategy: Hold / Buy | | | Prev Close | | | 18.73 |
|----------------|----------------------|-------|-------|-------------------|-------|-------|-------|
| Support | 18.62 | 18.66 | 18.69 | Resistance | 18.93 | 18.97 | 19.00 |

Buy targeting the resistance zone defined in between PKR19.50 - 19.70 with risk defined below PKR18.60

| NBP | Strategy: Buy | | | Prev Close | | | 81.64 |
|----------------|---------------|-------|-------|-------------------|-------|-------|-------|
| Support | 81.19 | 81.34 | 81.49 | Resistance | 82.45 | 82.60 | 82.74 |

Buy at weakness targeting PKR82.60 - 83.20, place risk below PKR80.00

| PTC | Strategy: Buy | | | Prev Close | | | 20.12 |
|----------------|---------------|-------|-------|-------------------|-------|-------|-------|
| Support | 19.73 | 19.81 | 19.89 | Resistance | 20.41 | 20.49 | 20.56 |

Buy targeting PKR20.40 - 20.60 with risk defined below PKR19.80.

| MCB | Strategy: Buy | | | Prev Close | | | 214.16 |
|----------------|---------------|--------|--------|-------------------|--------|--------|--------|
| Support | 212.87 | 213.22 | 213.57 | Resistance | 215.87 | 216.22 | 216.56 |

Buy targeting PKR216.20 with risk defined below PKR212.00.

| NML | Strategy: Buy | | | Prev Close | | | 63.94 |
|----------------|---------------|-------|-------|-------------------|-------|-------|-------|
| Support | 61.88 | 62.17 | 62.46 | Resistance | 64.33 | 64.62 | 64.90 |

Buy targeting PKR64.50 - 65.00, with risk defined below PKR62.80.

This memorandum is produced by BMA Capital Management Limited and is only for the use of their clients. While the information contained herein is from sources believed reliable, we do not represent that it is accurate or complete and should not be relied upon as such. Opinions expressed may be revised at any time. This memorandum is for information only and is not an offer to buy or sell, or solicitation of any offer to buy or sell the securities mentioned.

KSE30 Index Support & Resistance Levels

| Script | Close | S1 | S2 | PIVOT | R1 | R2 | Upper | Lower |
|--------|--------|--------|--------|--------|--------|--------|--------|-------|
| KSE30 | 10,209 | 10,188 | 10,188 | 10,188 | 10,188 | 10,188 | 10,720 | 9,699 |
| AHSL | 45.85 | 45.6 | 45.4 | 45.9 | 46.2 | 46.4 | 48.1 | 43.6 |
| AICL | 121.25 | 120.7 | 120.3 | 121.3 | 122.0 | 122.4 | 127.3 | 115.2 |
| ANL | 21.35 | 21.3 | 21.2 | 21.5 | 21.7 | 21.8 | 22.4 | 20.3 |
| APL | 355.00 | 353.4 | 352.3 | 355.3 | 357.2 | 358.3 | 372.8 | 337.3 |
| ATRL | 114.52 | 114.3 | 113.8 | 115.1 | 115.9 | 116.4 | 120.2 | 108.8 |
| BAFL | 13.25 | 13.2 | 13.1 | 13.3 | 13.4 | 13.5 | 13.9 | 12.6 |
| BAHL | 37.00 | 36.8 | 36.8 | 37.0 | 37.2 | 37.2 | 38.9 | 35.2 |
| DGKC | 30.65 | 29.8 | 29.5 | 30.4 | 30.9 | 31.2 | 32.2 | 29.1 |
| ENGRO | 208.70 | 205.6 | 204.1 | 208.2 | 210.7 | 212.3 | 219.1 | 198.3 |
| FFBL | 31.59 | 31.5 | 31.3 | 31.7 | 32.0 | 32.2 | 33.2 | 30.0 |
| FFC | 108.00 | 107.6 | 107.3 | 108.1 | 108.7 | 109.0 | 113.4 | 102.6 |
| HBL | 121.00 | 120.5 | 120.0 | 121.3 | 122.1 | 122.6 | 127.1 | 115.0 |
| HUBC | 31.15 | 31.1 | 31.0 | 31.2 | 31.4 | 31.5 | 32.7 | 29.6 |
| ICI | 170.00 | 169.5 | 169.0 | 170.5 | 171.4 | 172.0 | 178.5 | 161.5 |
| JSCL | 27.77 | 27.7 | 27.5 | 28.0 | 28.2 | 28.4 | 29.2 | 26.4 |
| KAPCO | 46.25 | 46.2 | 46.1 | 46.3 | 46.5 | 46.5 | 48.6 | 43.9 |
| LUCK | 70.50 | 70.3 | 69.9 | 70.9 | 71.6 | 72.0 | 74.0 | 67.0 |
| MCB | 213.99 | 213.5 | 212.8 | 214.7 | 215.8 | 216.5 | 224.7 | 203.3 |
| NBP | 81.52 | 81.5 | 81.2 | 81.9 | 82.4 | 82.7 | 85.6 | 77.4 |
| NML | 63.65 | 62.4 | 61.8 | 63.3 | 64.2 | 64.8 | 66.8 | 60.5 |
| NRL | 171.05 | 170.8 | 169.9 | 172.4 | 173.9 | 174.8 | 179.6 | 162.5 |
| OGDC | 119.02 | 117.1 | 116.2 | 118.7 | 120.3 | 121.3 | 125.0 | 113.1 |
| PAKRI | 26.92 | 26.6 | 26.4 | 26.9 | 27.3 | 27.5 | 28.3 | 25.6 |
| PKGS | 148.96 | 147.8 | 147.4 | 148.4 | 149.1 | 149.5 | 156.4 | 141.5 |
| POL | 235.50 | 231.5 | 229.9 | 234.1 | 236.6 | 238.2 | 247.3 | 223.7 |
| PPL | 198.25 | 196.6 | 195.5 | 198.3 | 199.9 | 201.0 | 208.2 | 188.3 |
| PSO | 306.00 | 303.8 | 303.0 | 305.1 | 306.4 | 307.2 | 321.3 | 290.7 |
| PTC | 20.20 | 19.9 | 19.8 | 20.2 | 20.4 | 20.6 | 21.2 | 19.2 |
| SHEL | 280.35 | 280.1 | 279.4 | 281.2 | 282.3 | 282.9 | 294.4 | 266.3 |
| UBL | 64.72 | 64.5 | 64.0 | 65.2 | 65.9 | 66.3 | 68.0 | 61.5 |