

Trailblazer

Technical Analysis

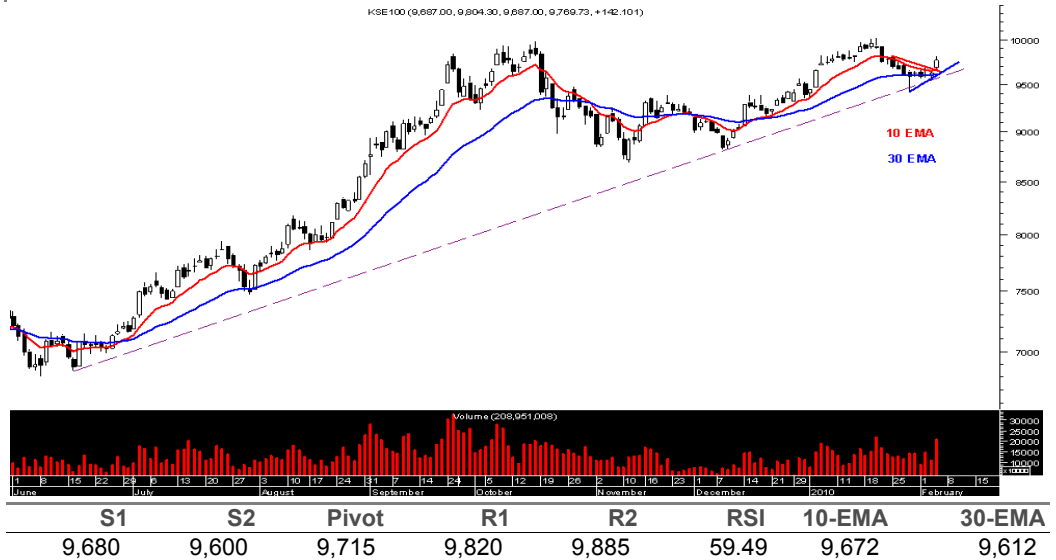
Nurali Barkatali

nurali.barkatali@bmacapital.com
+92 21 111 BMA 111 (Ext: 2056)

KSE100

Prev Close	9,628
Open	9,687
High	9,804
Low	9,687
Close	9,770
Change	142.10
%Change	1.48
Volume (mn)	208.86

Likely to retest 10k



STRATEGY

A zealous bullish move in the previous session helped index to propel through the resistance defined at around 9,700, the benchmark index is likely to test the resistance area in between 9,850 – 9,920.

Additionally, the consolidative price action structure in last two weeks have formed a symmetrical triangular and the resistance has already been taken out, giving an index target of around 10,000. However, the ride further is likely to be volatile. We suggest building of positions on penetration through the aforementioned resistance.

Trailblazer

Technical Analysis

Nurali Barkatali

nurali.barkatali@bmacapital.com

+92 21 111 BMA 111 (Ext: 2056)

Stock Picks

OGDC	Strategy: Buy			Prev Close		117.13	
Support	115.17	115.56	115.95	Resistance	118.47	118.86	119.23

A retest of support at around PKR116.00, cannot be ruled out. Buy into weakness with stop close below PKR114.80 targeting PKR117.60 - 118.00.

PPL	Strategy: Buy			Prev Close		196.95	
Support	191.69	192.45	193.21	Resistance	198.09	198.85	199.57

Buy at around PKR195.00, targeting PKR198.00 - 200.00, with stop placed below PKR192.00.

UBL	Strategy: Buy			Prev Close		66.07	
Support	65.48	65.67	65.86	Resistance	67.10	67.29	67.47

Buy on close above PKR67.50.

POL	Strategy: Buy			Prev Close		232.35	
Support	227.96	228.69	229.42	Resistance	234.15	234.88	235.57

Approaching is a resistance in between PKR233.00 - 235.00. Should that be taken out further strength towards PKR238.00 - 242.00 is expected.

LUCK	Strategy: Buy			Prev Close		70.74	
Support	69.18	69.41	69.63	Resistance	71.07	71.30	71.51

Buy on close above PKR72.00 targeting PKR74.00 - 76.00.

BOP	Strategy: Hold / Buy			Prev Close		19.04	
Support	18.82	18.88	18.95	Resistance	19.37	19.43	19.49

Buy targeting the resistance zone defined in between PKR19.50 - 19.70 with risk defined below PKR18.60

NBP	Strategy: Buy			Prev Close		82.44	
Support	81.43	81.60	81.76	Resistance	82.81	82.98	83.13

Buy targeting PKR83.20 - 84.00, place risk below PKR81.50

BAFL	Strategy: Buy			Prev Close		13.41	
Support	13.21	13.25	13.29	Resistance	13.53	13.57	13.61

Buy targeting PKR13.80 with risk defined below PKR13.05

MCB	Strategy: Sell			Prev Close		215.33	
Support	213.57	214.09	214.60	Resistance	217.92	218.44	218.92

A retest of support at around PKR212.00 is expected. Sell with risk defined at above PKR218.00(Trade intraday only)

ABL	Strategy: Buy			Prev Close		63.01	
Support	62.59	62.68	62.77	Resistance	63.34	63.43	63.51

Surpassing the resistance at around PKR63.50 would open up further room towards the recent highs of around PKR66.00. Risk is defined on close below PKR62.50.

This memorandum is produced by BMA Capital Management Limited and is only for the use of their clients. While the information contained herein is from sources believed reliable, we do not represent that it is accurate or complete and should not be relied upon as such. Opinions expressed may be revised at any time. This memorandum is for information only and is not an offer to buy or sell, or solicitation of any offer to buy or sell the securities mentioned.

KSE30 Index Support & Resistance Levels

Script	Close	S1	S2	PIVOT	R1	R2	Upper	Lower
KSE30	10,177	10,068	10,023	10,141	10,214	10,259	10,686	9,668
AHSL	45.76	45.4	45.1	45.9	46.4	46.7	48.0	43.5
AICL	120.00	119.3	118.7	120.4	121.4	122.1	126.0	114.0
ANL	21.64	21.1	20.9	21.5	21.9	22.1	22.7	20.6
APL	357.90	356.1	355.2	357.6	359.0	359.9	375.8	340.0
ATRL	115.60	115.1	114.6	115.9	116.6	117.1	121.4	109.8
BAFL	13.42	13.3	13.2	13.4	13.5	13.6	14.1	12.7
BAHL	37.00	36.7	36.6	37.0	37.2	37.3	38.9	35.2
DGKC	29.60	29.4	29.3	29.6	29.8	29.9	31.1	28.1
ENGRO	202.32	196.1	194.0	199.4	202.7	204.8	212.4	192.2
FFBL	31.60	31.5	31.3	31.9	32.3	32.6	33.2	30.0
FFC	107.61	106.3	105.7	107.3	108.3	108.9	113.0	102.2
HBL	121.51	121.0	120.4	122.0	123.0	123.6	127.6	115.4
HUBC	31.35	31.1	31.0	31.3	31.4	31.5	32.9	29.8
ICI	170.24	169.6	168.8	170.8	172.1	172.8	178.8	161.7
JSCL	28.00	27.8	27.7	28.1	28.3	28.4	29.4	26.6
KAPCO	46.35	46.2	46.1	46.4	46.5	46.6	48.7	44.0
LUCK	70.50	69.5	69.1	70.3	71.0	71.4	74.0	67.0
MCB	214.70	214.4	213.4	216.1	217.7	218.7	225.4	204.0
NBP	82.50	81.8	81.5	82.3	82.8	83.2	86.6	78.4
NML	62.70	62.1	61.9	62.5	62.9	63.1	65.8	59.6
NRL	175.00	170.0	168.3	172.7	175.3	177.0	183.8	166.3
OGDC	116.99	115.9	115.1	117.2	118.4	119.2	122.8	111.1
PAKRI	26.67	26.5	26.4	26.7	26.9	27.1	28.0	25.3
PKGS	148.00	147.2	146.6	148.2	149.2	149.8	155.4	140.6
POL	232.10	229.3	227.9	231.7	234.1	235.5	243.7	220.5
PPL	198.00	193.6	192.0	196.0	198.4	200.0	207.9	188.1
PSO	305.00	303.4	302.1	305.5	307.6	308.9	320.3	289.8
PTC	20.15	19.7	19.5	20.0	20.3	20.5	21.2	19.1
SHEL	281.25	281.1	280.2	282.5	283.9	284.8	295.3	267.2
UBL	66.00	65.8	65.5	66.5	67.1	67.5	69.3	62.7