

Trailblazer

Technical Analysis

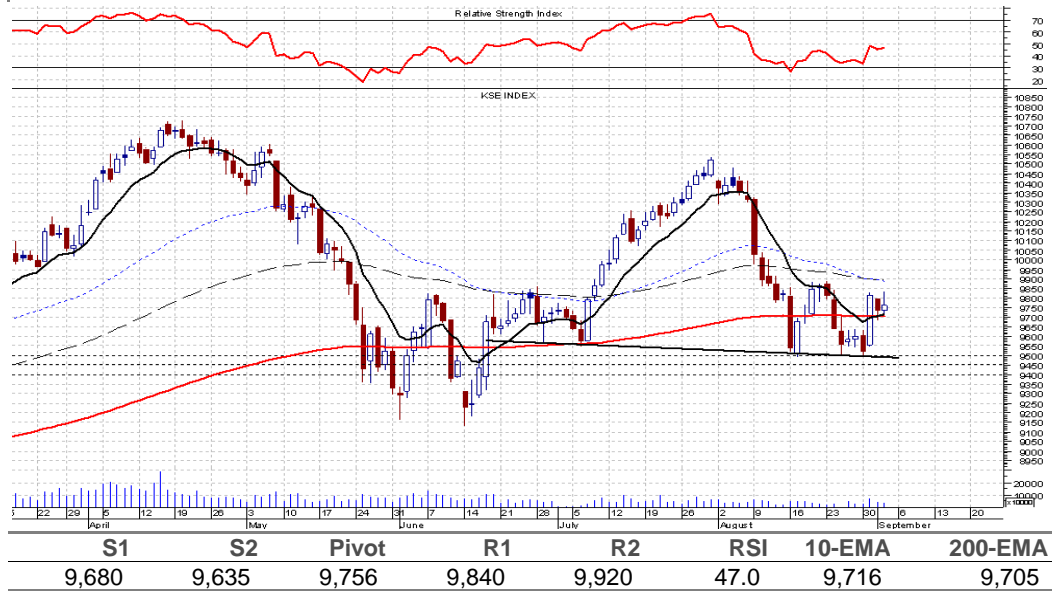
Nurali Barkatali

nurali.barkatali@bmacapital.com
+92 21 111 BMA 111 (Ext: 2056)

KSE100

Prev Close	9,735
Open	9,733
High	9,834
Low	9,717
Close	9,763
Change	27.51
%Change	0.28%
Volume (mn)	34.81

Resistance remains firm



STRATEGY

Nervousness overshadowed the intraday strength as uncertainties loom over the MTS. However all of this is happening at the resistive range of 9,800-10,000; it should be remembered that only a closing move above 9,970 would indicate strength for short term.

Trailblazer

Technical Analysis

Nurali Barkatali

nurali.barkatali@bmacapital.com
+92 21 111 BMA 111 (Ext: 2056)

Stock Picks

POL	Strategy: Sell				Prev Close		223.39
Support	221.82	222.28	222.74	Resistance	225.72	226.18	226.62

Sell targeting PKR221.00 - 219.00, with risk defined above PKR227.50

PPL	Strategy: Sell				Prev Close		205.22
Support	203.91	204.22	204.52	Resistance	206.46	206.77	207.05

Sell targeting PKR202.50, with risk defined above PKR208.00

NBP	Strategy: Sell				Prev Close		63.09
Support	62.56	62.76	62.96	Resistance	64.25	64.45	64.64

Sell targeting PKR62.00 - 61.50 with risk defined above PKR64.77

Engro	Strategy: Sell				Prev Close		170.97
Support	169.53	169.94	170.35	Resistance	173.02	173.43	173.82

Sell targeting PKR166.00 - 168.00, with risk defined above PKR174.00

MCB	Strategy: Sell				Prev Close		189.56
Support	188.46	188.79	189.12	Resistance	191.25	191.58	191.89

Sell targeting PKR185.50, with risk defined above PKR192.60

OGDC	Strategy: Sell				Prev Close		143.46
Support	140.91	141.37	141.83	Resistance	144.85	145.31	145.75

Sell targeting PKR140.00 - 138.50, with risk defined above PKR145.90

NML	Strategy: Sell				Prev Close		43.38
Support	42.84	42.99	43.14	Resistance	44.12	44.27	44.41

Sell targeting PKR42.50 - 42.00, with risk defined above PKR43.98

PSO	Strategy: Sell				Prev Close		250.86
Support	248.39	248.91	249.44	Resistance	252.83	253.35	253.85

Sell targeting PKR244.00 - 240.00, with risk defined above PKR256.00

FFBL	Strategy: Sell				Prev Close		28.54
Support	28.34	28.38	28.43	Resistance	28.72	28.76	28.81

Sell on move below PKR28.27 targeting PKR27.65, with risk defined above PKR28.78

DGKC	Strategy: Sell				Prev Close		25.4
Support	24.91	25.02	25.13	Resistance	25.85	25.96	26.06

Sell targeting PKR24.50, with risk defined above PKR26.20

This memorandum is produced by BMA Capital Management Limited and is only for the use of their clients. While the information contained herein is from sources believed reliable, we do not represent that it is accurate or complete and should not be relied

KSE30 Index Support & Resistance Levels

Script	Close	S1	S2	S3	PIVOT	R1	R1	R3	Upper	Lower
KSE30	9,636	9,620	9,607	9,510	9,662	9,688	9,704	9,814	10,118	9,154
AHSL	22.65	22.3	22.3	21.6	22.7	22.9	23.0	23.8	23.8	21.5
AICL	66.75	65.7	65.5	63.5	66.6	67.2	67.5	69.9	70.1	63.4
APL	308.03	307.8	307.3	303.6	309.5	310.5	311.2	315.6	323.4	292.6
ATRL	81.35	79.6	79.2	76.3	81.0	81.8	82.3	85.8	85.4	77.3
BAFL	8.08	8.0	8.0	7.9	8.1	8.1	8.1	8.2	8.5	7.7
BAHL	29.93	29.6	29.6	29.1	29.8	29.9	30.0	30.5	31.4	28.4
DGKC	25.38	25.1	25.0	24.2	25.5	25.7	25.8	26.8	26.6	24.1
ENGRO	171.50	170.5	170.1	167.2	171.9	172.7	173.2	176.7	180.1	162.9
FFBL	28.60	28.4	28.4	28.1	28.6	28.7	28.7	29.1	30.0	27.2
FFC	104.75	104.7	104.6	103.6	105.1	105.4	105.6	106.7	110.0	99.5
HBL	96.10	96.0	95.7	93.9	96.9	97.4	97.7	100.0	100.9	91.3
HUBC	36.75	36.7	36.6	36.2	36.9	37.0	37.1	37.7	38.6	34.9
ICI	119.70	119.5	119.3	117.8	120.2	120.7	120.9	122.8	125.7	113.7
INDU	221.00	220.8	220.3	217.0	222.3	223.3	223.9	227.9	232.1	210.0
JSCL	10.05	9.9	9.9	9.5	10.1	10.2	10.3	10.8	10.6	9.5
KAPCO	40.66	40.5	40.4	39.8	40.8	41.0	41.1	41.8	42.7	38.6
LOTPTA	8.29	8.2	8.2	8.1	8.3	8.3	8.3	8.5	8.7	7.9
LUCK	68.75	68.5	68.3	67.4	68.9	69.1	69.3	70.4	72.2	65.3
MARI	119.00	94.7	87.3	35.3	118.7	133.5	142.6	205.4	125.0	113.1
MCB	189.50	189.1	188.8	186.5	190.2	190.8	191.2	194.0	199.0	180.0
MTL	539.00	534.9	533.0	519.8	541.0	544.8	547.1	563.1	566.0	512.1
NBP	63.10	63.0	62.8	61.4	63.6	64.0	64.3	65.9	66.3	59.9
NML	43.50	43.2	43.0	42.0	43.7	44.0	44.2	45.4	45.7	41.3
OGDC	143.00	141.7	141.2	138.0	143.2	144.1	144.7	148.6	150.2	135.9
POL	223.50	222.8	222.3	219.1	224.3	225.2	225.8	229.7	234.7	212.3
PPL	205.10	204.5	204.2	202.1	205.5	206.1	206.4	209.0	215.4	194.8
PSO	251.00	249.5	249.0	245.3	251.2	252.2	252.9	257.3	263.6	238.5
PTC	18.07	18.0	18.0	17.7	18.1	18.2	18.2	18.5	19.0	17.2
SHEL	194.25	194.0	193.5	190.0	195.7	196.7	197.3	201.5	204.0	184.5
UBL	54.65	54.5	54.4	53.8	54.7	54.9	55.0	55.7	57.4	51.9